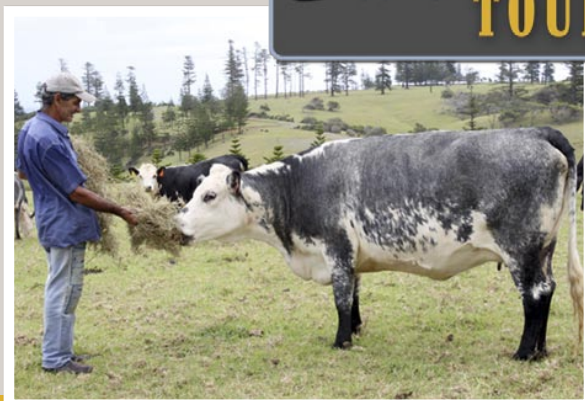


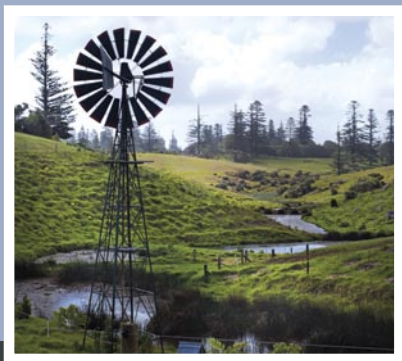
Norfolk Blue FARM TOUR



Monday to Fridays 9am - 11am
Bookings essential

Join us on our Norfolk Blue Farm Tour as you explore our 100 Acre Farm and learn of our unique Norfolk Blue herd as well as meeting our infamous "Mr Bull". We will guide you around our restored Headstone Creek which incorporates a series of swales to improve water retention and ground water quality on our farm.

We proudly own the only windmill on the Island and will wander with you through our beautifully restored valley with nearly 10,000 plants!



PHONE 22068 TO BOOK

www.norfolkblue.com



- 2 hours
- includes morning tea

As you are guided around our 100 Acre Farm in a comfortable Nissan 4 x 4 station wagon, you will learn the historical significance of this property and experience it as a working farm.

Our 100 Acre Farm originally formed part of the Melanesian Mission which was established on the Island in the 1860's. Today, it is the largest contiguous farm on the Island and we will also visit the old Homestead Restaurant which is now home to our restaurant and where we proudly showcase our unique beef - Norfolk Blue.



www.norfolkblue.com



PHONE 22068
TO BOOK